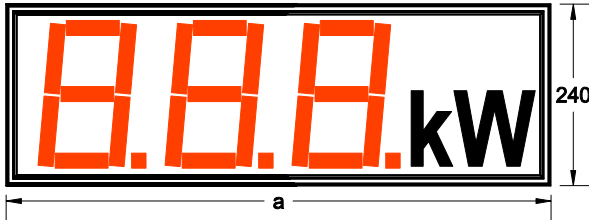


Type: DA200-NAxx/AxxxE

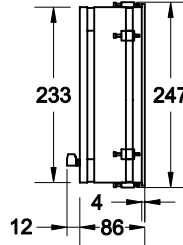
DC current/voltage

front view

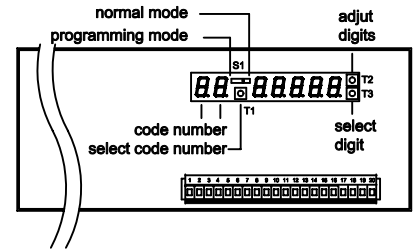
DA200-NA30/AxxRED



side view



rear view



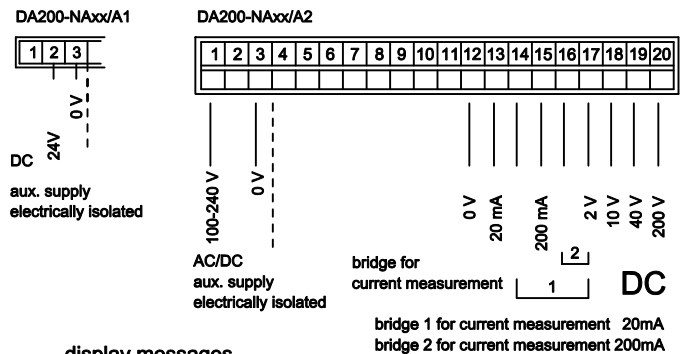
case dimensions

DA200	aluminium case powder seam		bezel width [a]	cutout panel b x h
	case depth(with terms)	86 (98) mm		
DA200-NA __ /xxxxE	DA200-NA __ /xxxxE D	DA200-NA __ /xxxxE D1		
30			576	570 x 234
40	30		720	714 x 234
50	40	30	912	906 x 234
	50	40	1056	1050 x 234
		50	1248	1242 x 234

programming mode

code number	display	description
0		min. display value
1	P-L	min. input signal take over with T3 (to be applied)
2		max. display value
3	P-H	max. input signal take over with T3 (to be applied)
4	--99 -L--	average value of 1-99 measurements line break indication with value falling of 25% -- = no L = yes
5	2/5/10	rounding of last digit in steps of 2, 5 or 10

rear connector with screw-type terminals



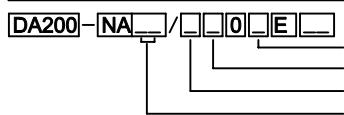
display messages

Pr	EEProm under programming
----	overflow (flashing of display segments in the middle)

general data

aux. supply :	DA200-NAxx/A1...	18-35 V DC
	DA200-NAxx/A2...	100-240 V AC/DC
temperature range:	-20 °C ... +65 °C	
measuring range(V):	2V / 10V / 40V / 200V	
measuring range(A):	20mA / 200mA	
display max:	programmable	
display zero :	programmable	
principle of measurement:	Dual-Slope-Integration	
error of measurement :	+/- 0,1% of measuring value +/- 1 digit/segment	
overflow :	flashing of segments in the middle	
average value :	adjustable from 1-500 measurements	
rounding last digit :	adjustable in steps of 2, 5 or 10	

input resistance	terminal	Ri
	17	100 kOhm
	18	560 kOhm
	19	2,2 MOhm
	20	12 MOhm
	13	100 Ohm
	15	10 Ohm
display:	200 mm, LED red or green	
resolution :	..NA30..	-199 ...999
	..NA40..	-1999 ...9999
	..NA50..	-19999 ...99999



dimension:
display colour:
aux. supply :
input :
display :

D = max. 2 figures	D1 = max. 4 figures
R = red	G = green
1 = 24V DC	2 = 230V AC
A = DC current/voltage	
30 = 3 digits	40 = 4 digits
	50 = 5 digits

GS Gebhardt & Schäfer Industrie-Elektronik GmbH

Porschestraße 11
D-51381 Leverkusen
Tel. +49 (0) 21 71 / 73 72 2 -0
Fax +49 (0) 21 71 / 73 72 2 -39
Internet: <http://www.GS-GmbH.de>
E-Mail: info@GS-GmbH.de

Kölner Bank eG
IBAN: DE62 3716 0087 0940 9250 10
BIC: GENODED1CGN
Kreissparkasse Köln
IBAN: DE65 3705 0299 0312 0061 45
BIC: COKSDE33

Deutsche Bank AG
IBAN: DE30 3757 0024 0851 0851 00
BIC: DEUTDE3375
Foreign Payments:
Account-No. 851 085 1
S.W.I.F.T. DEUTDEB 375

Geschäftsführer:
Karlheinz Schäfer
Guido Gebhardt
USt.-Nr. DE 123713297
Amtsgericht Köln, HRB 48860
D-U-N-S@: 340802073